

# CEIP MONTAGUT MODULAR INDUSTRIALIZED SCHOOL BUILDING

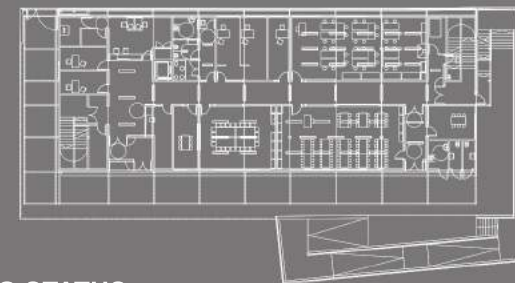
## GENERAL INFORMATION

Location: c/ Farigola, s/n Polígon Urbanístic, 2 Santa Susanna (Maresme)  
Developer: Ajuntament de Santa Susanna  
Architect: Conxita Balcells Blesa

Number of Modules: 27 Units  
Traditional System: 189,65 m2 built  
eMii-CS: 1.812,66 m2 built  
Total Built Area: 2.002,31 m2 built

## OVERVIEW

Construction of high school building between the existing primary building and the sports court. It is a Compact Habit modular EMI-CS building, with a ground floor single volume and two floors, parallel to the street. It is at elevation 15.00 and has independent access on the Farigola street. It is a double porch school with a central corridor. It has 2 staircases, an outer staircase that gives access to the track and a perimeter porch from the entrance leading to a ramp area to the existing courtyards. It includes library, workshop room and laboratory, plus classrooms, special classrooms and administration areas. Interior finishes are in exposed wood, plasterboard, ceramic tile in bathrooms and pvc pavement, sandwich panel facades.



## BUILDING STATUS

Project: April 2019  
Work: 6,5 months  
Manufacturing: 11 weeks

