

# PRIMARY SCHOOL

## GENERAL INFORMATION

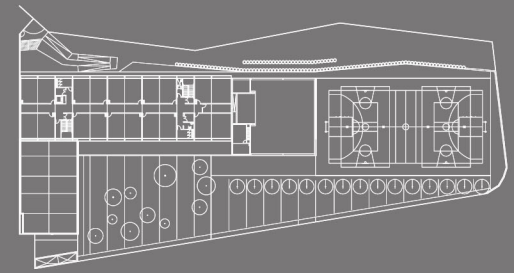
Location: c/ Tossa, s/n  
Vidreres  
Developer: Ajuntament de Vidreres  
Architect: Conxita Balcells Blesa

Number of Modules: 29 Units  
Traditional System: 0,00 m<sup>2</sup>  
eMii System: 1900,00 m<sup>2</sup>  
Total Built Area: 1900,00 m<sup>2</sup>

## DESCRIPTION

This primary school located in Vidreres is resolved with 29 eMii-CS offsite modules. The building layout conforms an "L" shape and it's erected in two levels: ground floor and first floor, connected with two staircases.

The ground floor hosts the library and hosts the parents' association, with direct access from the exterior. The administration, primary classes, changing room and gym are also placed at ground level. First floor allocates the rest of the primary classes and the teacher's room.



## BUILDING STATUS

Project: June 2018  
Work: 5 months  
Manufacturing: 8 weeks

